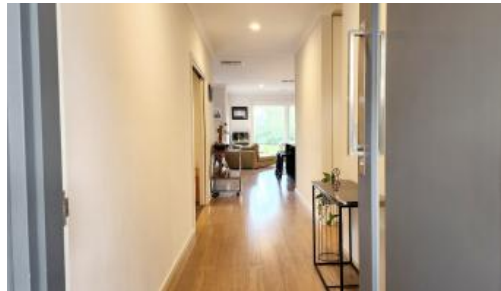


Sold

3 Expedition Bvd, Meadows



THE FAMILY HOME DREAM

** Please phone or text Nina on 0419201600 to register your intention to inspect this property at 2pm Saturday 2nd July **

Calling all families who yearn for fresh country air, where there's room for boisterous play in a sprawling backyard. Where adults can entertain and childhood friendships are made. As importantly, where home is your palace, graced with modern comforts and room for everyone. This is a home for life.

Truly a special property to present for sale. This 2017 built home has all the bells & whistles on a generous 1,444sqms that additionally adjoins a reserve.

A statement floorplan, where it's current use is 4 bedrooms + study + home theatre + 2 living rooms, this could very easily be a 6 bedroom home or accommodate a watchful eye over elderly parents.

With a showstopping kitchen, offering 40mm stone island bench, walk in pantry, Westinghouse 6 burner gas cooktop with electric oven, Smeg dishwasher and soft close cabinetry, pass the home cooked meals straight over to the dining table that can comfortably seat 10.

🛏 5 🚿 2 🚗 4 📏 1,444 m2

Price SOLD for \$890,000

Property Type Residential

Property ID 43

Land Area 1,444 m2

Floor Area 285 m2

AGENT DETAILS

Nina Bidgood - 0419 201 600

OFFICE DETAILS

Hahndorf Real Estate

0419 201 600

HAHNDORF
REAL ESTATE

For such a large home, it is a breeze to close the doors off to any of the wings, and use those spaces when required. Never mind about heating or cooling, with temperature senses in every living and bed room, it is the epitome of convenience - gas heating, evaporative cooling at the flick of a switch, each being fully customisable.

The 5kw solar system chips down the power bill, but being a 6 star energy rated home with double glazed windows and doors, it need not be a big concern anyway.

Cleverly a forethought to maximise usable space, the 60,000litre rainwater tank and 90litre gas tanks are sited underground, with a quality filtration system.

And with all the tech requirements these days, this home has NBN (Fibre to the Premises) and Ethernet throughout the house to keep everyone happy and online.

A beautiful rear yard that's ever so slightly tiered, with pop up irrigation sprinkler system, separated by mature conifers, this is your bank canvas to do as you wish. A pool? A grand designs inspired masterpiece? Large shed? Or keep it as a lovely spot to sit and look up at the big country sky in the evening around a campfire.

There's convenient rear access available through a side gate as well as a second roller door through the garage.

Inspection a must to fully appreciate!

The above information provided has been furnished to us by the vendor/s. We have not verified whether or not that information is accurate and do not have any belief in one way or the other in its accuracy. We do not accept any responsibility to any person for its accuracy and do no more than pass it on. All interested parties should make and rely upon their own inquiries in order to determine whether or not this information is in fact accurate.